



Cambridge IGCSE™

CANDIDATE
NAME

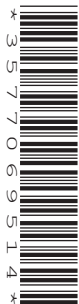
--

CENTRE
NUMBER

--	--	--	--	--

CANDIDATE
NUMBER

--	--	--	--



MUSIC

0410/11

Paper 1 Listening

May/June 2020

Approximately 1 hour 15 minutes

You must answer on the question paper.

You will need: Insert (enclosed)

INSTRUCTIONS

- Answer **all** questions in Sections **A**, **B** and **C**.
- For each question, tick (✓) one of the boxes to show the most appropriate answer, or write your answer in the space provided.
- Section **D**: answer **all** questions on the **one Set Work** you have studied, in the space provided.
- There will be time for you to look at the questions before you hear each extract of music. You may find it helpful to make notes on the music as you listen.
- Use a black or dark blue pen.
- Write your name, centre number and candidate number in the boxes at the top of the page.
- Do **not** use an erasable pen or correction fluid.
- Do **not** write on any bar codes.
- You may use an HB pencil for any music.
- The insert contains the scores for Music C1 and your chosen Set Work in Section D.

INFORMATION

- The total mark for this paper is 70.
- The number of marks for each question or part question is shown in brackets [].

This document has **16** pages. Blank pages are indicated.

SECTION A [16 marks]

You will hear two examples of music, selected from the Baroque, Classical or Romantic periods or the Twentieth Century.

Each extract will be played **four** times, with a pause between each playing.

Music A1

You will hear an extract of music for voices and instruments. The words are printed below. Read through questions **1** to **4**.

- 1 *On an echoing road*
- 2 *Trotting in unison,*
- 3 *Now out of step,*
- 4 *Now as one again,*
- 5 *Are two horses saddled together,*
- 6 *Guided by a single hand.*

1 Describe the music of the piano introduction.

.....

.....

..... [2]

2 One of the voices is a male alto (countertenor). What other voice is heard?

- Soprano
- Alto
- Tenor
- Bass

[1]

3 How does the music match the meaning of the words in lines 1–4? Give **two** specific examples.

Example 1:

.....

Example 2:

.....

[2]

4 (a) When was this music written?

.....

[1]

(b) Give **two** reasons for your answer.

.....

.....

.....

[2]

Music A2

You will hear an extract from an instrumental piece. Look at the skeleton score below and read through questions 5 to 9.

- 5 What key is the music in?
 [1]

- 6 Name the instrument that plays the printed melody.
 [1]

- 7 What is the texture of the music?
 [1]

- 8 Describe **two** changes when the music continues after the printed extract.

 [2]

9 (a) Which of the following best describes this music?

March

Opera

Oratorio

Waltz

[1]

(b) Give **two** reasons for your answer.

.....

.....

.....

..... [2]

SECTION B [22 marks]

You will hear three extracts of music from around the world. Each extract will be played **four** times, with a pause between each playing.

Music B1

You will hear an extract from a piece for instruments. Look at the skeleton score below and read through questions 10 to 12.

1 2 3 4

Instrument? Compositional device?

5 6 7 8

Extract continues...

10 (a) Name the instrument that plays the printed melody.

..... [1]

(b) What compositional device is used in bars 3–4?

..... [1]

11 After the printed extract the melody is repeated. Describe **two** differences in the next eight bars.

..... [2]

12 (a) Where does this music come from?

..... [1]

(b) Apart from the instruments used, give a reason for your answer.

..... [1]

Music B2

You will hear an extract of music for voices and instruments. Read through questions **13** to **14**.

13 Describe the music of the instrumental introduction (before the voices enter).

.....
.....
.....
..... [3]

14 (a) Where does this music come from?

..... [1]

(b) How is the music sung by the voices typical of music from this area?

.....
.....
..... [2]

Music B3 (World Focus: Arabic Music)

You will hear **three** passages performed by a *Takht* ensemble, separated by short gaps. Read through questions **15** to **19**.

15 What features of the music in the **first** passage are typical of Arabic music?

.....
.....
.....
..... [3]

16 (a) What instrument is heard in the **second** passage of music?

..... [1]

(b) What is the Arabic name for this passage of music?

..... [1]

17 How is the music in the **third** passage different from the **first** passage?

.....
.....
..... [2]

18 Explain how the different passages in this extract are typical of the structure of *Takht* instrumental music.

.....
.....
..... [2]

19 How did music by *Takht* ensembles reach a wider audience in the later twentieth century?

.....
..... [1]

BLANK PAGE

Turn over for Section C

SECTION C [16 marks]

You will hear one extract of music. The extract will be played **four** times, with a pause between each playing.

Music C1

You will hear an extract from a piece for instruments. Look at the skeleton score, which you will find on the separate Insert, and read through questions **20** to **26**. Answer the questions in this booklet.

20 What word describes the articulation in bars 3–6?

..... [1]

21 Describe the texture in bars 7–10.

.....

 [2]

22 (a) Name the key and cadence in bars 13–14.

Key:

Cadence: [2]

(b) What is the relationship of this key to the tonic key of the extract?

..... [1]

23 The melody is incomplete in bars 17–18. Fill in the missing notes on the staff below. The rhythm has been given to help you. [3]

24 Name the bracketed interval in bar 32.

..... [2]

25 (a) Which of the following best describes the **printed** extract?

March

Minuet

Sonata

Waltz

[1]

(b) Give a reason for your answer.

.....
..... [1]

(c) What is the name for the section which is heard after the printed extract?

..... [1]

26 This music was written in the Classical period. What features of the extract are typical of this period?

.....
.....
..... [2]

SECTION D [16 marks]

Set Work

Answer all the questions on **one** set work:

either Mozart: Piano Concerto No. 21 (questions 27 to 34)

or Rossini: *William Tell* Overture (questions 35 to 42).

Mozart: Piano Concerto No. 21

You will hear two extracts. Each extract will be played **twice**, with a pause between each playing.

Music D1

Look at the skeleton score in the Insert, and read through questions 27 to 30.

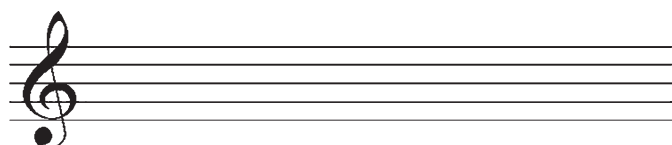
27 How is the music in bars 1–7 different from when it was played earlier in the movement (before the recorded extract)?

.....
..... [1]

28 Name the section of the movement which begins at bar 26.

..... [1]

29 On the staff below, write the third and fourth notes of the viola part in bar 28 in the treble clef. [2]



30 (a) Describe precisely the chord played at the start of bar 38.

..... [1]

(b) Explain in detail what is played next in the movement, immediately after the recorded extract.

.....
.....
.....
..... [3]

Music D2

Look at the skeleton score, which you will find in the separate Insert, and read through questions 31 to 34.

31 (a) What section of the movement is this extract taken from?
..... [1]

(b) How is the music in bars 1–11 different from when it was first played in the movement (before the recorded extract)?
.....
.....
..... [2]

32 (a) What is the function of the music in bars 18–27?
.....
..... [1]

(b) What is this passage called?
..... [1]

33 (a) What key does the music reach at bar 30?
..... [1]

(b) How is this key related to the tonic key of the movement?
..... [1]

34 Who was the soloist in the first performance of this concerto?
..... [1]

Rossini: *William Tell* Overture

You will hear two extracts. Each extract will be played **twice**, with a pause between each playing.

Music D3

Look at the skeleton score, which you will find in the separate Insert, and read through questions 35 to 39.

35 What is the tempo marking of this section of the overture?

..... [1]

36 What instrument plays the melody in bars 1–4?

..... [1]

37 (a) What does this music represent?

..... [1]

(b) How does the music reflect this?

.....

 [2]

38 What does the flute play in bars 22–26?

.....

 [2]

39 When was the opera *William Tell* first performed?

1792

1829

1846

1868

[1]

Music D4

Look at the skeleton score, which you will find in the separate Insert, and read through questions **40** to **42**.

40 (a) Describe the music of the introduction (bars 1–17).

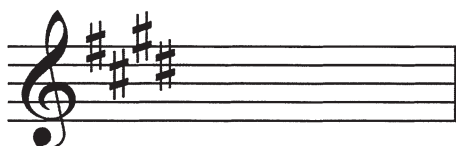
.....

 [2]

(b) What does it represent?

..... [1]

41 On the staff below, write the first two notes of the clarinet part in bar 52 at sounding pitch. The key signature has been given. [2]



42 Complete the table below to show the structure of the extract, naming the main keys. [3]

Bars	Section	Key
1–17	Introduction	E major
18–34	A
.....
.....	Link	
.....

BLANK PAGE

Permission to reproduce items where third-party owned material protected by copyright is included has been sought and cleared where possible. Every reasonable effort has been made by the publisher (UCLES) to trace copyright holders, but if any items requiring clearance have unwittingly been included, the publisher will be pleased to make amends at the earliest possible opportunity.

To avoid the issue of disclosure of answer-related information to candidates, all copyright acknowledgements are reproduced online in the Cambridge Assessment International Education Copyright Acknowledgements Booklet. This is produced for each series of examinations and is freely available to download at www.cambridgeinternational.org after the live examination series.

Cambridge Assessment International Education is part of the Cambridge Assessment Group. Cambridge Assessment is the brand name of the University of Cambridge Local Examinations Syndicate (UCLES), which itself is a department of the University of Cambridge.