
MUSIC

0410/12

Paper 1 Listening

October/November 2019

INSERT

Approx. 1 hour 15 minutes

READ THESE INSTRUCTIONS FIRST

This Insert contains the skeleton scores for:

Music C1

Music D1

Music D2

Music D3

Music D4

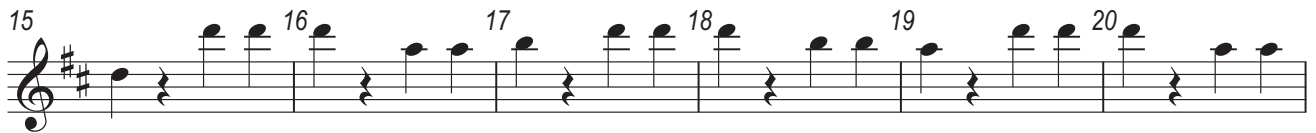


This syllabus is regulated for use in England, Wales and Northern Ireland as a Cambridge International Level 1/Level 2 Certificate.

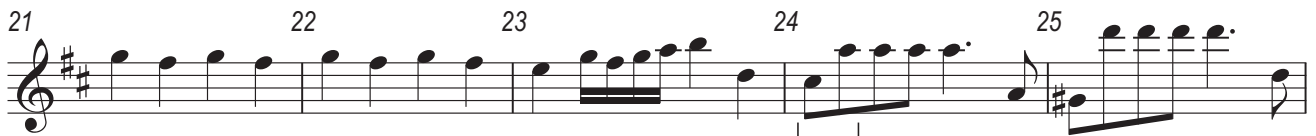
This document consists of **7** printed pages and **1** blank page.

INSERT FOR MUSIC C1

Answer the questions in the Question Paper, not on this Insert.



Accompaniment?



Interval?



Key?



Complete the melody



47 48 49 50 51 52

53 54 55 56

57 58 59 60

61 62 63

64 65 66 67 68

Ornament?

How used?

Detailed description: The musical score consists of five staves of music in treble clef, key of D major (two sharps). The first staff (measures 47-52) shows a sequence of notes: 47 (half note D), 48 (quarter note E), 49 (quarter note F#), 50 (half note G), 51 (quarter note A), and 52 (quarter note B). A bracket under measures 51-52 is labeled 'How used?'. The second staff (measures 53-56) has a whole rest in measure 53, a whole rest in measure 54, a whole rest in measure 55, and a sixteenth-note run in measure 56. A bracket above measure 56 is labeled 'Ornament?'. The third staff (measures 57-60) continues the sixteenth-note run in measure 57, has a whole rest in measure 58, and a quarter note G in measure 59. The fourth staff (measures 61-63) has a whole rest in measure 61, a whole rest in measure 62, and a sixteenth-note run in measure 63. The fifth staff (measures 64-68) continues the sixteenth-note run in measure 64, has a whole rest in measure 65, a quarter note A in measure 66, a quarter note B in measure 67, and a whole rest in measure 68.

INSERT FOR MUSIC D1

Answer the questions in the Question Paper, not on this Insert.

1 2 Clarinet in A *leggiero* 3

Violins Transpose

4 5 6

Flute

7 (Flute) 8 9 10

11 Oboe 12 13 14

15 16 17 18 Violins 19

Folk dance? Key? 3

20 21 22

23 24

25 26

Extract continues...

INSERT FOR MUSIC D2

Answer the questions in the Question Paper, not on this Insert.

1 Orchestra 2 3 4

Section? Changes?

5 6 7 8 9

Procession

10 11 12 13

14 15 16 17 18

INSERT FOR MUSIC D3

Answer the questions in the Question Paper, not on this Insert.

1 Clarinet in A 2 3 4 5

Transpose

6 7 8 9

10 11 12 13 14

15 16 17 18

Register?

19 20

21 Clarinet in A 22 23

Violin 1

Key and cadence?

INSERT FOR MUSIC D4

Answer the questions in the Question Paper, not on this Insert.

1 Violin 1 2 3 4 5

6 7 8 9

Clarinet?

10 11 12 13 14

Clarinet writing?

15 16 17 18 19

20 21 22 23

24 25 26 27

BLANK PAGE

Permission to reproduce items where third-party owned material protected by copyright is included has been sought and cleared where possible. Every reasonable effort has been made by the publisher (UCLES) to trace copyright holders, but if any items requiring clearance have unwittingly been included, the publisher will be pleased to make amends at the earliest possible opportunity.

To avoid the issue of disclosure of answer-related information to candidates, all copyright acknowledgements are reproduced online in the Cambridge Assessment International Education Copyright Acknowledgements Booklet. This is produced for each series of examinations and is freely available to download at www.cambridgeinternational.org after the live examination series.

Cambridge Assessment International Education is part of the Cambridge Assessment Group. Cambridge Assessment is the brand name of the University of Cambridge Local Examinations Syndicate (UCLES), which itself is a department of the University of Cambridge.