



Cambridge International Examinations
Cambridge International General Certificate of Secondary Education

CANDIDATE
NAME

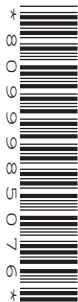
--

CENTRE
NUMBER

--	--	--	--	--

CANDIDATE
NUMBER

--	--	--	--



MUSIC

0410/12

Paper 1 Listening

May/June 2016

Approx. 1 hour 15 minutes

Candidates answer on the Question Paper.

No Additional Materials are required.

READ THESE INSTRUCTIONS FIRST

Write your Centre number, candidate number and name on all the work you hand in.

Write in dark blue or black pen.

You may use an HB pencil for any diagrams, graphs, music or rough working.

Do not use staples, paper clips, glue or correction fluid.

DO NOT WRITE IN ANY BARCODES.

Answer **all** questions in **Sections A, B and C**. In **Section D**, answer **all** the questions on the **one set work** you have studied.

In the Insert, you will find the skeleton scores for Music C1 and your chosen set work in Section D.

For each question, tick (✓) one of the boxes to show the most appropriate answer, or write your answer in the space provided. There will be time for you to look at the questions before you hear each extract of music.

You may find it helpful to make notes on the music as you listen. Write your answers in the Question Paper booklet.

At the end of the examination, fasten all your work securely together.

The number of marks is given in brackets [] at the end of each question or part question.

The syllabus is approved for use in England, Wales and Northern Ireland as a Cambridge International Level 1/Level 2 Certificate.

This document consists of **13** printed pages, **3** blank pages and **1** Insert.

SECTION A [16 marks]

You will hear two examples of music, selected from the Baroque, Classical or Romantic periods or the Twentieth Century.

Each extract will be played **four** times, with a pause between each playing.

Music A1

This is an extract from an opera. The words are sung in Italian. The scene is a party. After a short instrumental introduction, the singer invites the guests to enjoy themselves. Read through questions 1 to 4.

1 (a) How many beats are there in each bar?

..... [1]

(b) Which of the following describes the music of the introduction?

- Ground bass
- March
- Minuet
- Waltz

[1]

2 What type of voice is heard at the beginning of the extract?

..... [1]

3 How does the music help to create the party scene?

.....
.....
.....
..... [3]

4 (a) When was this music written?

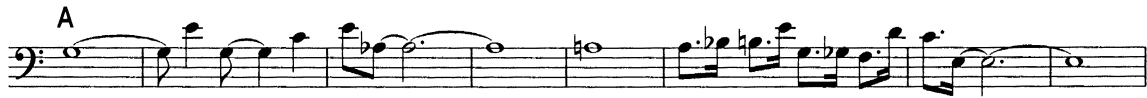
..... [1]

(b) Give **one** reason for your answer.

.....
..... [1]

Music A2

You will hear an extract of music for instruments. The extract begins with melodic phrase **A**, which is printed below, and then continues. Look at the skeleton score, and read through questions **5** to **8**.



5 What instruments play the printed melody?

..... [1]

6 Which of the following best shows the structure of the first **four** melodic phrases?

- AABA
- AABB
- ABAB
- ABCA

[1]

7 (a) What instrument plays a solo in the second half of the extract?

..... [1]

(b) Describe **one** instrumental effect used by this instrument during the solo.

.....
..... [1]

8 (a) What style of music is this?

- Impressionism
- Jazz
- Minimalism
- Neo-classicism

[1]

(b) What features of the music are typical of this style?

.....
.....
.....
..... [3]

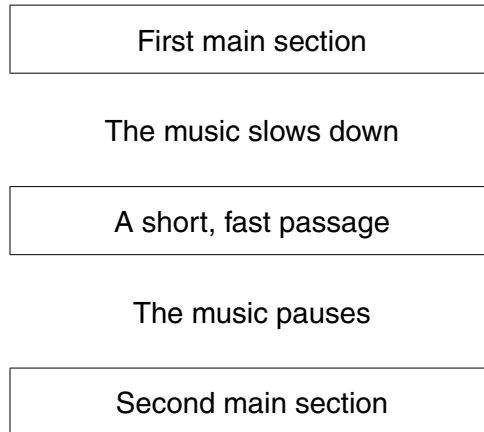
[Total for Section A: 16]

SECTION B [22 marks]

You will hear three extracts of music from around the world. Each extract will be played **four** times, with a pause between each playing.

Music B1

You will hear an extract from an instrumental piece. Look at the diagram, which shows the structure of the music, and read through questions **9** to **11**.



9 Describe the music in the first main section.

.....

.....

.....[2]

10 Describe the music in the second main section.

.....

.....

.....[2]

11 (a) What is the name of this type of ensemble?

..... [1]

(b) Where does this music come from?

..... [1]

Music B2

You will hear an extract of music for instruments. After a short introduction, the melody printed below is heard, which is the first section of the music. The extract then continues with a second section of music. Look at the skeleton score and read through questions 12 to 15.

Introduction

Extract continues...

12 During the short introduction, the instruments ascend and then descend a scale. What type of scale is it?

- Chromatic
- Minor
- Pentatonic
- Raga

[1]

13 What instruments play the printed melody?

.....

[1]

14 After the printed music, the extract continues with a second section of music. Compare the two sections.

.....

 [3]

15 Where does this music come from?

.....

[1]

Music B3 (World Focus: Japanese Instrumental Music)

You will hear an extract of Japanese music. Read through questions **16** to **18**.

16 (a) What is the first instrument that you hear?

..... [1]

(b) Describe how the sound is produced on this instrument.

.....
.....
..... [2]

17 Name the two melody instruments which join, in the order they are heard.

First instrument:

Second instrument: [2]

18 (a) What is the name of this style of music?

..... [1]

(b) At what type of venue is it traditionally performed?

..... [1]

(c) What features of the music are typical of this style?

.....
.....
.....
..... [3]

[Total for Section B: 22]

SECTION C [16 marks]

You will hear one extract of music. The extract will be played **four** times, with a pause between each playing.

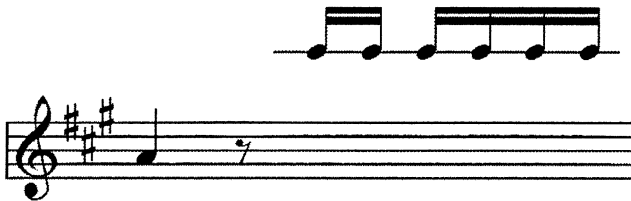
Music C1

You will hear a piece of instrumental music. Look at the skeleton score, which you will find in the separate Insert, and read through questions **19** to **26**. Answer the questions in this booklet.

19 Suggest a suitable **Italian** tempo marking for this music.

..... [1]

20 The melody is incomplete in bar 16. Fill in the missing notes on the staff below. The rhythm has been given to help you. (The same melody is heard again in bar 18.) [3]



21 What compositional device is heard in bars 32 – 33?

..... [1]

22 What happens in bar 58?

.....
.....
.....[2]

23 Name the bracketed interval in bar 67.

.....

[2]

24 Complete the table below to show the structure and main key centres of the extract.

[3]

Section	Bars	Key
A	1 – 22	A major

25 What type of piece is this?

- Concerto
- Sonata
- String quartet
- Symphony

[1]

26 (a) What period is this music from?

.....

[1]

(b) Give **two** reasons for your answer.

.....

 [2]

[Total for Section C: 16]

SECTION D [16 marks]

Set Work

Answer all the questions on **one** set work:
either Vivaldi: 'Spring' from *The Four Seasons* (questions 27 to 33)
or Rodrigo: *Concierto de Aranjuez* (questions 34 to 42).

Vivaldi: 'Spring' from *The Four Seasons*

You will hear two extracts. Each extract will be played **twice**, with a pause between each playing.

Music D1

Look at the skeleton score, which you will find in the separate Insert, and read through questions 27 to 29.

27 The music from bars 1 to 7 represents birds. Similar music is also heard earlier in the movement (before the recorded extract).

(a) In what ways is the music different here?

.....
.....
..... [2]

(b) What features of the music are the same?

.....
.....
..... [3]

28 At bar 12³ the bass line is marked *Tasto solo*. What does this mean?

.....
..... [1]

29 Describe what is played by the solo violin from bar 12³ to the end of the extract.

.....
.....
..... [2]

Music D2

Look at the skeleton score in the Insert, and read through questions **30** to **33**.

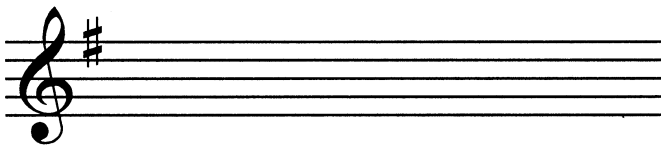
30 (a) Name the key at the start of the extract.

..... [1]

(b) What is the key of the movement as a whole?

..... [1]

31 On the staff below, write out both the first two notes of the viola part in bar 8 in the treble clef. [2]



32 Describe the accompaniment to the solo violin part in bars 10⁴ to 17.

.....
.....
..... [2]

33 Describe what happens in the music immediately after the recorded extract.

.....
.....
..... [2]

[Total for Section D: 16]

Rodrigo: *Concierto de Aranjuez*

You will hear two extracts. Each extract will be played **twice**, with a pause between each playing.

Music D3

Look at the skeleton score, which you will find in the separate Insert, and read through questions 34 to 37.

34 (a) What is the key of the theme at the beginning of the extract?

..... [1]

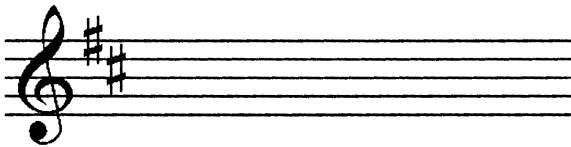
(b) What part of the movement is this?

..... [1]

(c) Comment on the choice of key for this section.

.....
.....[1]

35 On the staff below, write out the horn part in bar 7 at sounding pitch. The key signature has been given. [2]



36 Describe what happens in the music immediately after the recorded extract.

.....
.....
.....[2]

37 Rodrigo uses characteristics of a Spanish folk tradition throughout this concerto (including in the harmony of this extract). What is the name of this tradition?

..... [1]

Music D4

Look at the skeleton score in the Insert, and read through questions **38** to **42**.

38 (a) What is the key at the beginning of the extract?

..... [1]

(b) What is the relationship of this key to the tonic key of the movement?

..... [1]

39 What theme do the horns (and bassoons, cellos and basses) play when they enter at the end of bar 12?

.....
.....[1]

40 The theme from the beginning of the extract is heard again in bar 20. What key is it now?

..... [1]

41 (a) What compositional device is heard from bars 39 to 58?

- Alberti bass
 - Contrary motion
 - Dominant pedal
 - Tonic pedal
- [1]

(b) What is the function of this device?

.....
.....[1]

42 (a) Briefly describe the structure of the movement as a whole.

.....
.....[1]

(b) How does the recorded extract fit within this structure?

.....
.....[1]

[Total for Section D: 16]

BLANK PAGE

Permission to reproduce items where third-party owned material protected by copyright is included has been sought and cleared where possible. Every reasonable effort has been made by the publisher (UCLES) to trace copyright holders, but if any items requiring clearance have unwittingly been included, the publisher will be pleased to make amends at the earliest possible opportunity.

To avoid the issue of disclosure of answer-related information to candidates, all copyright acknowledgements are reproduced online in the Cambridge International Examinations Copyright Acknowledgements Booklet. This is produced for each series of examinations and is freely available to download at www.cie.org.uk after the live examination series.

Cambridge International Examinations is part of the Cambridge Assessment Group. Cambridge Assessment is the brand name of University of Cambridge Local Examinations Syndicate (UCLES), which is itself a department of the University of Cambridge.