

CANDIDATE
NAME

CENTRE
NUMBER

--	--	--	--	--

CANDIDATE
NUMBER

--	--	--	--



BIOLOGY

0610/62

Paper 6 Alternative to Practical

May/June 2019

1 hour

Candidates answer on the Question Paper.

No Additional Materials are required.

READ THESE INSTRUCTIONS FIRST

Write your centre number, candidate number and name on all the work you hand in.

Write in dark blue or black pen.

You may use an HB pencil for any diagrams or graphs.

Do not use staples, paper clips, glue or correction fluid.

DO NOT WRITE IN ANY BARCODES.

Answer **all** questions.

Electronic calculators may be used.

You may lose marks if you do not show your working or if you do not use appropriate units.

At the end of the examination, fasten all your work securely together.

The number of marks is given in brackets [] at the end of each question or part question.

- 1 Anaerobic respiration in yeast causes the blue dye, methylene blue, to become colourless.

A student investigated the effect of temperature on the rate of respiration in yeast.

Step 1 7 cm³ of a yeast suspension was put into a test-tube labelled **warm**. The test-tube was then placed into a beaker of warm water. The temperature of the water in the beaker was 45 °C.

Step 2 7 cm³ of a yeast suspension was put into a test-tube labelled **cool**. The test-tube was then placed into a beaker of cool water. The temperature of the water in the beaker was 20 °C.

Step 3 After three minutes, the student added five drops of methylene blue dye to the yeast suspensions in each of the test-tubes. The yeast suspensions became blue in both test-tubes.

Step 4 A layer of vegetable oil was carefully poured on top of the yeast suspension in each of the test-tubes, as shown in Fig. 1.1.

The layer of oil stopped air from reaching the yeast cells in the suspension so that the conditions were anaerobic

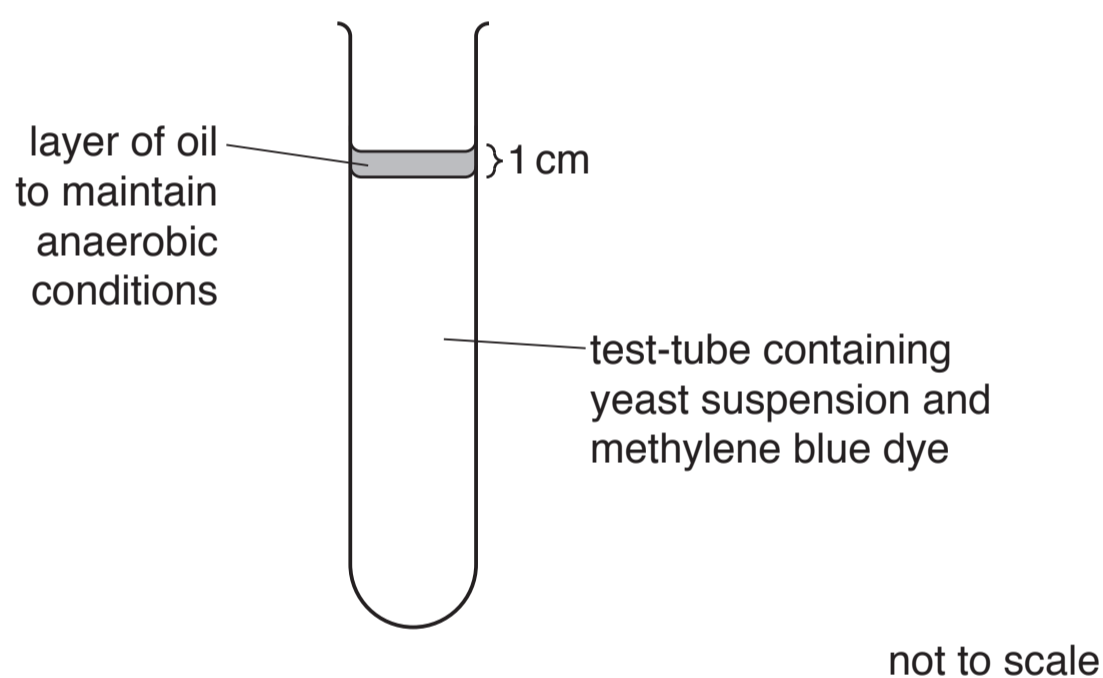


Fig. 1.1

Step 5 A stop-clock was started.

Step 6 The student observed the **warm** and **cool** test-tubes. When they could no longer see the blue colour they recorded the time taken for the blue colour to disappear.

Fig. 1.2 shows the time on the stop-clock for each test-tube at the end of step 6.

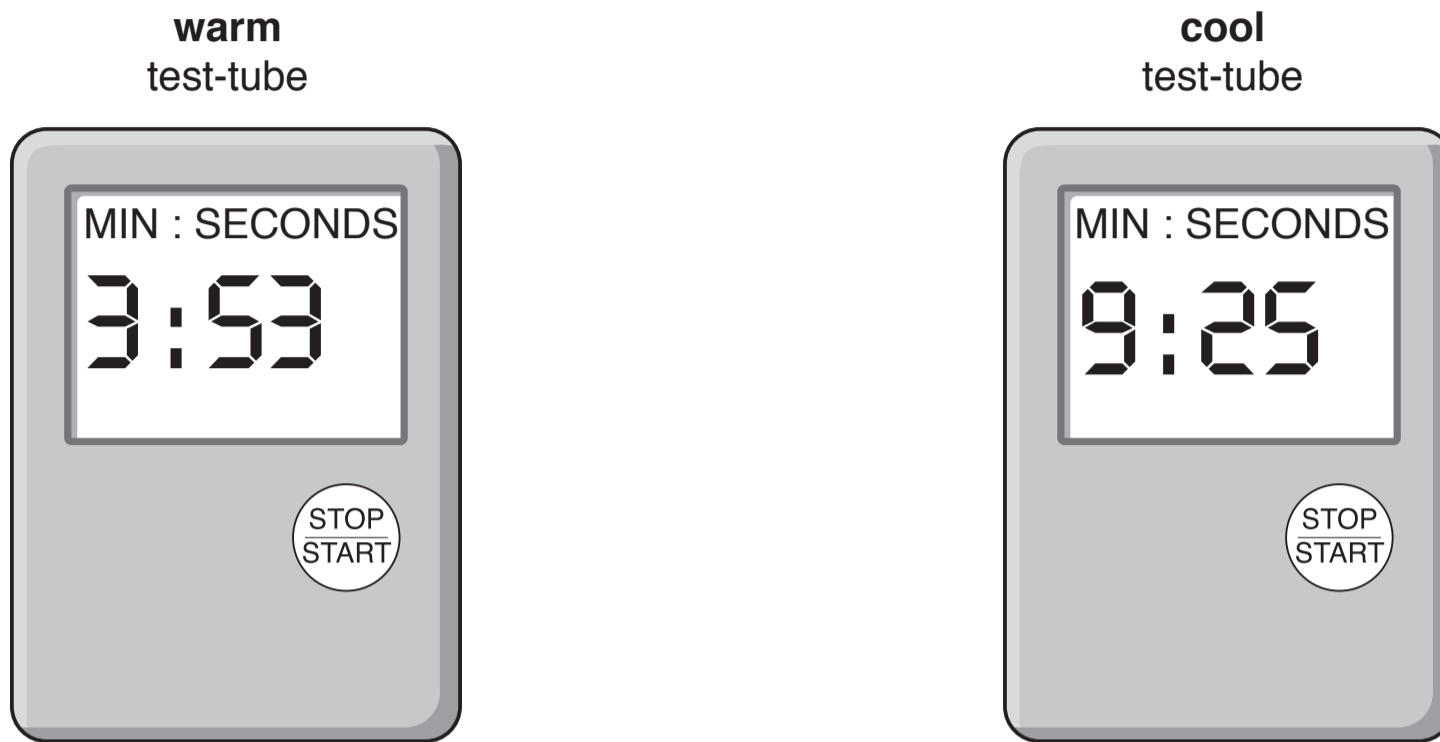


Fig. 1.2

(a) (i) Prepare a table to record the results.

Convert the times shown in Fig. 1.2 to seconds and record them in your table.

[3]

(ii) State a conclusion for the results in your table in 1(a)(i).

.....
.....
..... [1]

Step 7 The student used a thermometer to measure the temperatures of the warm water beaker and the cool water beaker at the end of the investigation.

Fig. 1.3 shows the temperatures on the thermometer at the **end** of the investigation.

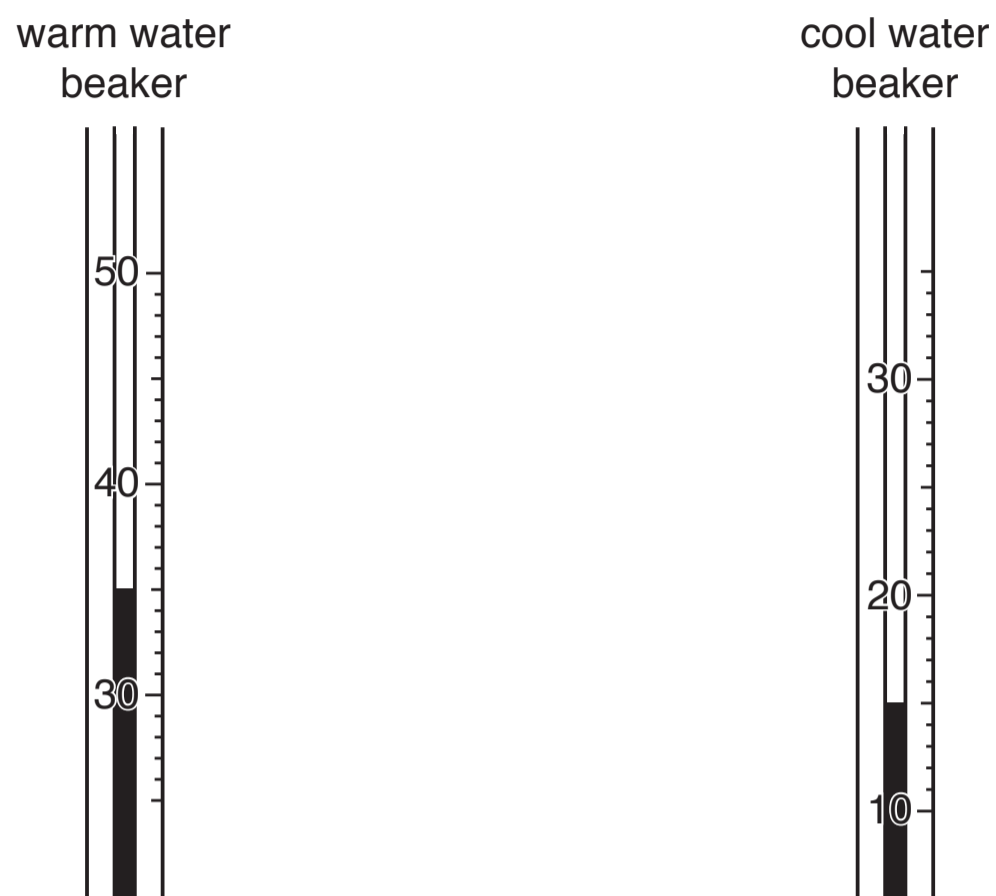


Fig. 1.3

- (iii) Complete Table 1.1 by recording the temperatures in the beakers at the start and at the end of the investigation.

Table 1.1

beaker	temperature at the start/ $^{\circ}\text{C}$	temperature at the end/ $^{\circ}\text{C}$
warm water		
cool water		

[1]

(iv) Identify the variable that was changed (independent variable) in this investigation.

..... [1]

(v) Identify **two** variables that were kept constant in this investigation.

1

2 [2]

(b) (i) Identify **one** possible source of error in step 6 and suggest an improvement for this error.

error

.....

improvement

.....

..... [2]

(ii) The data you have recorded in Table 1.1 may indicate that there is a source of error with the method used in this investigation.

Identify the possible error and suggest an improvement to the method to reduce the effect of this error.

error

.....

improvement

.....

..... [2]

BLANK PAGE

- 2 (a) Fig. 2.1 is a photograph showing four seed heads from a poppy plant.

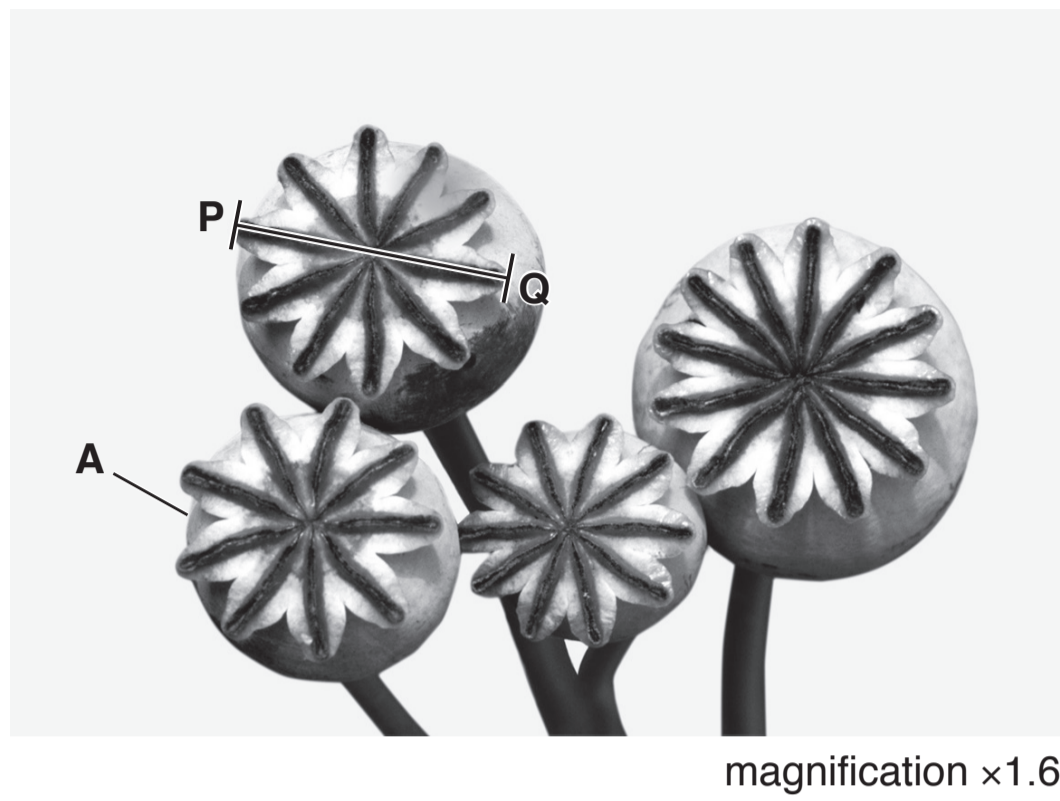


Fig. 2.1

- (i) Draw a large diagram of the seed head labelled **A**.

[4]

(ii) Measure the length of line **PQ** on Fig. 2.1. Include the unit.

length of line **PQ**

Calculate the actual size of the seed head using the formula and your measurement.

$$\text{magnification} = \frac{\text{length of line } \mathbf{PQ}}{\text{actual diameter of the seed head}}$$

Give your answer to the nearest whole number and include the unit.

Show your working.

.....
[3]

- (b) A student investigated the effect of pH on the germination of seeds. The student planted 25 seeds for each pH value.

The results of the investigation are shown in Table 2.1.

Table 2.1

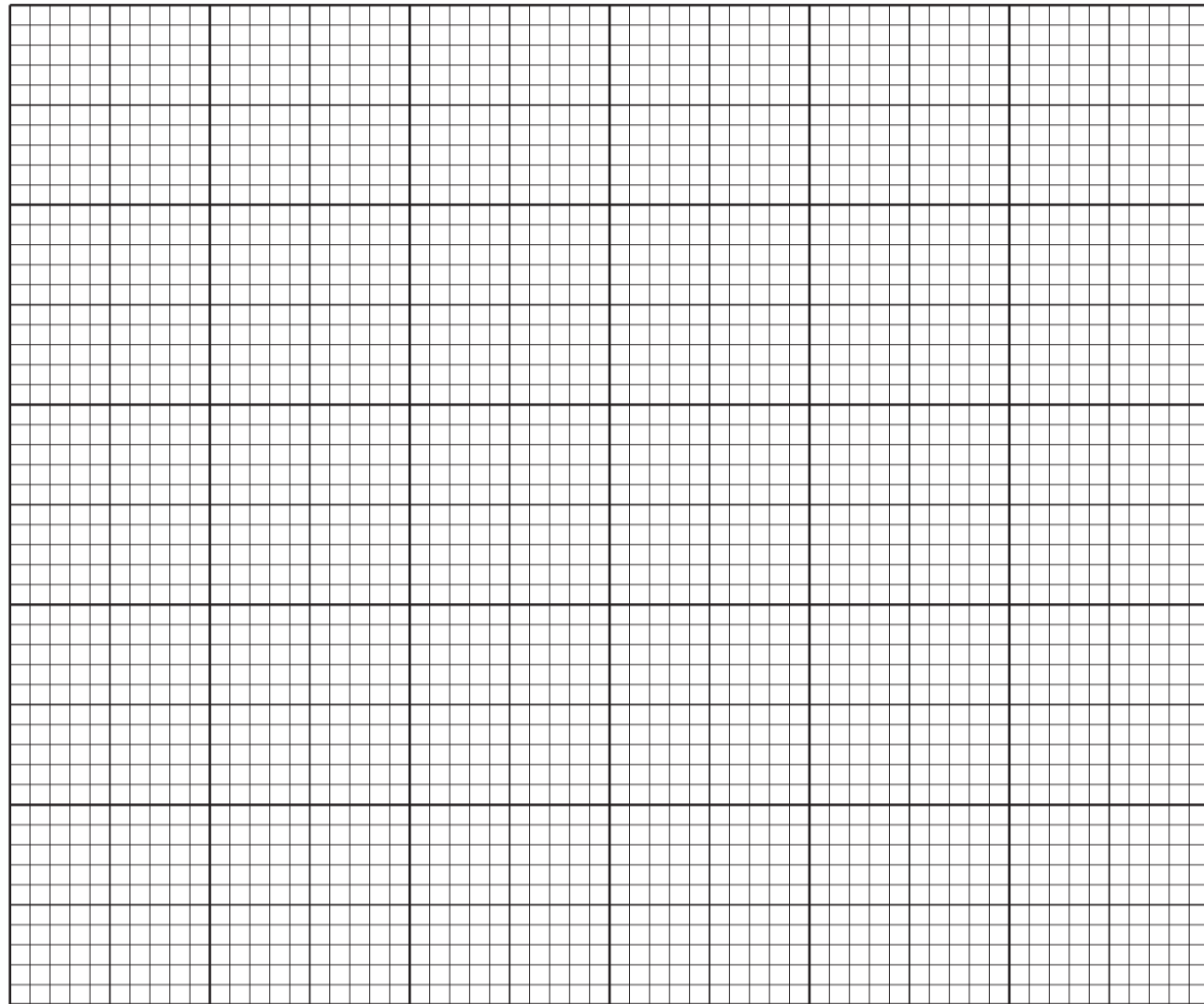
pH	number of seeds that germinated	percentage of seeds that germinated
4	20	80
5	23	92
6	24	96
7	19	76
8	15	
9	10	40

- (i) Calculate the percentage of seeds that germinated at pH8.

Show your working.

..... %
[2]

- (ii) Plot a line graph on the grid to show the effect of pH on the percentage of seeds that germinated using the data in Table 2.1.



[4]

- (iii) Describe the effect of pH on the percentage of seeds that germinated shown in your graph.

.....
.....
.....
.....

[2]

- (iv) The student wanted to obtain a more accurate value for the optimum (best) pH for the germination of seeds.

Suggest further investigative work that the student should carry out.

.....
.....
.....
.....

[2]

(c) During germination the starch within seeds is broken down to form reducing sugars.

Describe how you could test a sample of germinating seeds to find out if reducing sugars are present.

.....

.....

.....

.....

.....

.....

.....

..... [3]

[Total: 20]

Permission to reproduce items where third-party owned material protected by copyright is included has been sought and cleared where possible. Every reasonable effort has been made by the publisher (UCLES) to trace copyright holders, but if any items requiring clearance have unwittingly been included, the publisher will be pleased to make amends at the earliest possible opportunity.

To avoid the issue of disclosure of answer-related information to candidates, all copyright acknowledgements are reproduced online in the Cambridge Assessment International Education Copyright Acknowledgements Booklet. This is produced for each series of examinations and is freely available to download at www.cambridgeinternational.org after the live examination series.

Cambridge Assessment International Education is part of the Cambridge Assessment Group. Cambridge Assessment is the brand name of the University of Cambridge Local Examinations Syndicate (UCLES), which itself is a department of the University of Cambridge.