

MATHEMATICS

9709/11

Paper 1 Pure Mathematics 1 (P1)

May/June 2015

1 hour 45 minutes

Additional Materials: Answer Booklet/Paper
Graph Paper
List of Formulae (MF9)



READ THESE INSTRUCTIONS FIRST

If you have been given an Answer Booklet, follow the instructions on the front cover of the Booklet.

Write your Centre number, candidate number and name on all the work you hand in.

Write in dark blue or black pen.

You may use an HB pencil for any diagrams or graphs.

Do not use staples, paper clips, glue or correction fluid.

DO **NOT** WRITE IN ANY BARCODES.

Answer **all** the questions.

Give non-exact numerical answers correct to 3 significant figures, or 1 decimal place in the case of angles in degrees, unless a different level of accuracy is specified in the question.

The use of an electronic calculator is expected, where appropriate.

You are reminded of the need for clear presentation in your answers.

At the end of the examination, fasten all your work securely together.

The number of marks is given in brackets [] at the end of each question or part question.

The total number of marks for this paper is 75.

Questions carrying smaller numbers of marks are printed earlier in the paper, and questions carrying larger numbers of marks later in the paper.

This document consists of **4** printed pages.

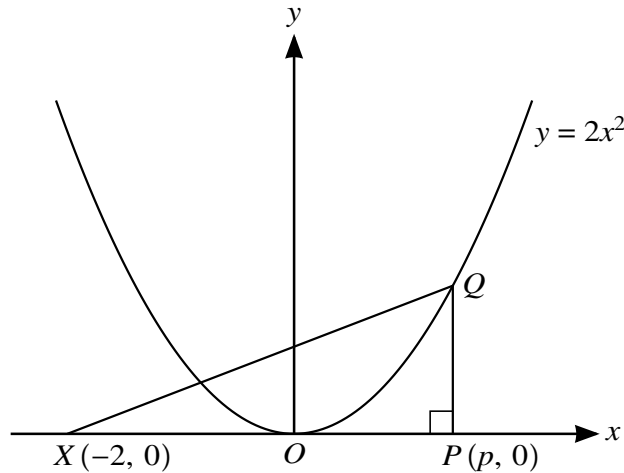
1 Given that θ is an obtuse angle measured in radians and that $\sin \theta = k$, find, in terms of k , an expression for

(i) $\cos \theta$, [1]

(ii) $\tan \theta$, [2]

(iii) $\sin(\theta + \pi)$. [1]

2



The diagram shows the curve $y = 2x^2$ and the points $X(-2, 0)$ and $P(p, 0)$. The point Q lies on the curve and PQ is parallel to the y -axis.

(i) Express the area, A , of triangle XPQ in terms of p . [2]

The point P moves along the x -axis at a constant rate of 0.02 units per second and Q moves along the curve so that PQ remains parallel to the y -axis.

(ii) Find the rate at which A is increasing when $p = 2$. [3]

3 (i) Find the first three terms, in ascending powers of x , in the expansion of

(a) $(1 - x)^6$, [2]

(b) $(1 + 2x)^6$. [2]

(ii) Hence find the coefficient of x^2 in the expansion of $[(1 - x)(1 + 2x)]^6$. [3]

4 Relative to the origin O , the position vectors of points A and B are given by

$$\vec{OA} = \begin{pmatrix} 3 \\ 0 \\ -4 \end{pmatrix} \quad \text{and} \quad \vec{OB} = \begin{pmatrix} 6 \\ -3 \\ 2 \end{pmatrix}.$$

(i) Find the cosine of angle AOB . [3]

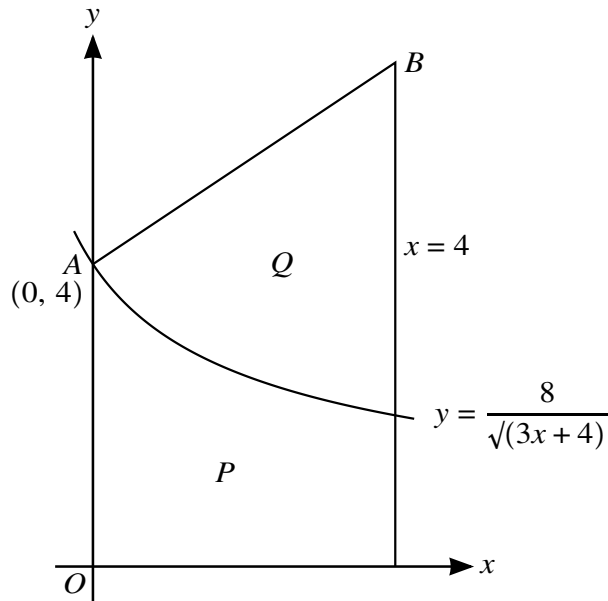
The position vector of C is given by $\vec{OC} = \begin{pmatrix} k \\ -2k \\ 2k - 3 \end{pmatrix}$.

(ii) Given that AB and OC have the same length, find the possible values of k . [4]

- 5 A piece of wire of length 24 cm is bent to form the perimeter of a sector of a circle of radius r cm.
- (i) Show that the area of the sector, A cm², is given by $A = 12r - r^2$. [3]
- (ii) Express A in the form $a - (r - b)^2$, where a and b are constants. [2]
- (iii) Given that r can vary, state the greatest value of A and find the corresponding angle of the sector. [2]
- 6 The line with gradient -2 passing through the point $P(3t, 2t)$ intersects the x -axis at A and the y -axis at B .
- (i) Find the area of triangle AOB in terms of t . [3]
- The line through P perpendicular to AB intersects the x -axis at C .
- (ii) Show that the mid-point of PC lies on the line $y = x$. [4]
- 7 (a) The third and fourth terms of a geometric progression are $\frac{1}{3}$ and $\frac{2}{9}$ respectively. Find the sum to infinity of the progression. [4]
- (b) A circle is divided into 5 sectors in such a way that the angles of the sectors are in arithmetic progression. Given that the angle of the largest sector is 4 times the angle of the smallest sector, find the angle of the largest sector. [4]
- 8 The function $f : x \mapsto 5 + 3 \cos\left(\frac{1}{2}x\right)$ is defined for $0 \leq x \leq 2\pi$.
- (i) Solve the equation $f(x) = 7$, giving your answer correct to 2 decimal places. [3]
- (ii) Sketch the graph of $y = f(x)$. [2]
- (iii) Explain why f has an inverse. [1]
- (iv) Obtain an expression for $f^{-1}(x)$. [3]
- 9 The equation of a curve is $y = x^3 + px^2$, where p is a positive constant.
- (i) Show that the origin is a stationary point on the curve and find the coordinates of the other stationary point in terms of p . [4]
- (ii) Find the nature of each of the stationary points. [3]
- Another curve has equation $y = x^3 + px^2 + px$.
- (iii) Find the set of values of p for which this curve has no stationary points. [3]

[Question 10 is printed on the next page.]

10



The diagram shows part of the curve $y = \frac{8}{\sqrt{3x+4}}$. The curve intersects the y -axis at $A(0, 4)$. The normal to the curve at A intersects the line $x = 4$ at the point B .

(i) Find the coordinates of B . [5]

(ii) Show, with all necessary working, that the areas of the regions marked P and Q are equal. [6]

Permission to reproduce items where third-party owned material protected by copyright is included has been sought and cleared where possible. Every reasonable effort has been made by the publisher (UCLES) to trace copyright holders, but if any items requiring clearance have unwittingly been included, the publisher will be pleased to make amends at the earliest possible opportunity.

To avoid the issue of disclosure of answer-related information to candidates, all copyright acknowledgements are reproduced online in the Cambridge International Examinations Copyright Acknowledgements Booklet. This is produced for each series of examinations and is freely available to download at www.cie.org.uk after the live examination series.

Cambridge International Examinations is part of the Cambridge Assessment Group. Cambridge Assessment is the brand name of University of Cambridge Local Examinations Syndicate (UCLES), which is itself a department of the University of Cambridge.