



# Cambridge International AS & A Level

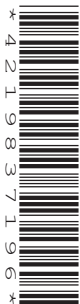
CANDIDATE  
NAME

CENTRE  
NUMBER

--	--	--	--	--

CANDIDATE  
NUMBER

--	--	--	--



## INFORMATION TECHNOLOGY

9626/12

Paper 1 Theory

February/March 2023

1 hour 45 minutes

You must answer on the question paper.

No additional materials are needed.

## INSTRUCTIONS

- Answer **all** questions.
- Use a black or dark blue pen.
- Write your name, centre number and candidate number in the boxes at the top of the page.
- Write your answer to each question in the space provided.
- Do **not** use an erasable pen or correction fluid.
- Do **not** write on any bar codes.
- You may use an HB pencil for any diagrams, graphs or rough working.
- Calculators must **not** be used in this paper.

## INFORMATION

- The total mark for this paper is 70.
- The number of marks for each question or part question is shown in brackets [ ].

This document has **12** pages. Any blank pages are indicated.



Online processing can be used when goods are purchased.

(c) Define what is meant by online processing.

.....  
.....  
..... [1]

(d) Johann has previously registered with an online store.

Describe the steps he takes when purchasing goods from the online store.

.....  
.....  
.....  
.....  
.....  
.....  
.....  
.....  
.....  
.....  
.....  
.....  
.....  
.....  
.....  
.....  
.....  
.....  
..... [5]

2 A linker is a type of system software used during the process of translating high level language programs to machine code.

Discuss the benefits and drawbacks of using a linker.

.....  
.....  
.....  
.....  
.....  
.....  
.....  
.....  
.....  
.....  
.....  
.....  
.....  
.....

[6]

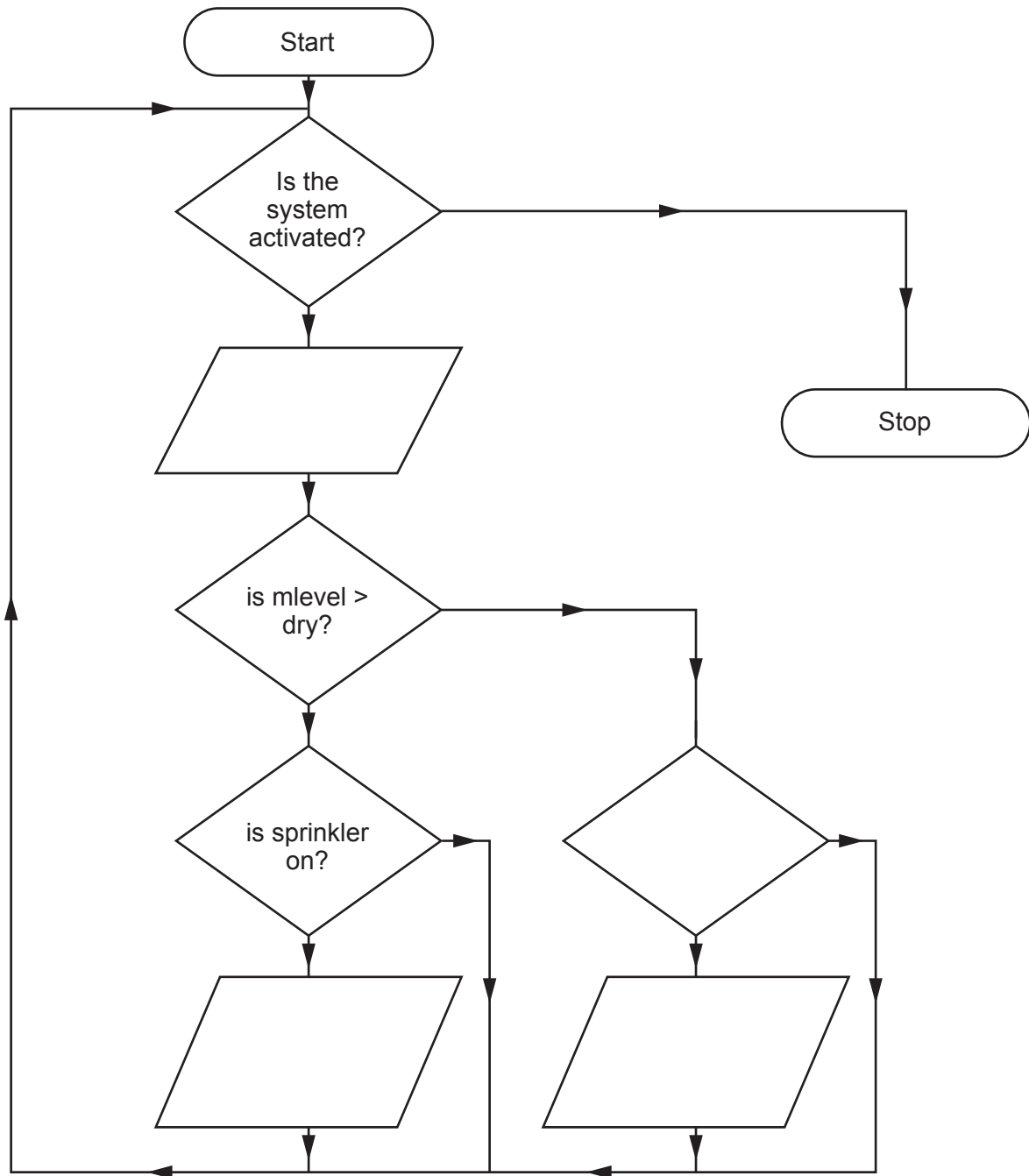


- 4 Mark has a small glasshouse. He lives in a warm country where plants can die if they are left without water for too long. The glasshouse has a microprocessor controlled sprinkler system and a moisture sensor in the soil.

Complete this flowchart to show the processing required to control the level of moisture in the soil of the glasshouse. You may assume that a pre-set value, **dry**, has already been input so that the system can test if the amount of moisture in the soil has reached or fallen below a certain level.

The user activates the microprocessor system by pressing a switch.

- (a) Complete the flowchart which inputs the moisture reading in the glasshouse and switches the sprinkler on and off according to this value. It also checks if the sprinkler is already on or off before attempting to switch it on or off.



[6]

(b) Flowcharts often contain subroutines.

(i) Draw the symbol used to represent a subroutine in a flowchart.

[1]

(ii) State what you would expect to see in the first box of a subroutine.

.....  
..... [1]

5 Explain why encryption is needed.

.....  
.....  
.....  
.....  
.....  
.....  
.....  
.....  
.....  
.....  
..... [4]

6 Sensors are used to measure physical variables.

(a) Describe these sensors and give an appropriate use in a monitoring system for each.

(i) Light .....  
.....  
.....  
..... [2]

(ii) Temperature .....  
.....  
.....  
..... [2]

(b) Sensors need to be calibrated before use.

Evaluate the different forms of calibration.

.....  
.....  
.....  
.....  
.....  
.....  
.....  
.....  
.....  
.....  
.....  
.....  
.....  
.....  
.....  
.....  
.....  
.....  
.....  
.....  
..... [6]



7 Phishing is a method used by hackers to obtain banking information from computer users.

Explain the process of phishing.

.....  
.....  
.....  
.....  
.....  
.....  
.....  
.....  
.....  
.....  
.....  
.....

[5]

8 Describe how people in developing countries can be disadvantaged when trying to use online shopping.

.....  
.....  
.....  
.....  
.....  
.....  
.....  
.....  
.....  
.....  
.....  
.....

[5]

9 Describe what is meant by the malware terms.

(a) worm

.....  
.....  
.....  
.....  
.....  
.....  
.....  
.....  
.....  
.....  
..... [4]

(b) Trojan

.....  
.....  
.....  
.....  
.....  
.....  
.....  
.....  
.....  
..... [4]

**10** Describe what is meant by the term open source file format. Include in your answer an explanation of why open source file formats are needed.

.....

.....

.....

.....

.....

.....

.....

.....

.....

.....

.....

.....

.....

..... [5]

**BLANK PAGE**

---

Permission to reproduce items where third-party owned material protected by copyright is included has been sought and cleared where possible. Every reasonable effort has been made by the publisher (UCLES) to trace copyright holders, but if any items requiring clearance have unwittingly been included, the publisher will be pleased to make amends at the earliest possible opportunity.

To avoid the issue of disclosure of answer-related information to candidates, all copyright acknowledgements are reproduced online in the Cambridge Assessment International Education Copyright Acknowledgements Booklet. This is produced for each series of examinations and is freely available to download at [www.cambridgeinternational.org](http://www.cambridgeinternational.org) after the live examination series.

Cambridge Assessment International Education is part of Cambridge Assessment. Cambridge Assessment is the brand name of the University of Cambridge Local Examinations Syndicate (UCLES), which is a department of the University of Cambridge.