



UNIVERSITY OF CAMBRIDGE INTERNATIONAL EXAMINATIONS  
General Certificate of Education Advanced Subsidiary Level

---

**ENVIRONMENTAL MANAGEMENT**

**8291/23**

Paper 2 Hydrosphere and Biosphere

**May/June 2013**

INSERT

**1 hour 30 minutes**

---

**READ THESE INSTRUCTIONS FIRST**

This Insert contains Fig. 1.2, Fig. 2.1, Fig. 2.3 and Fig. 4.1.  
DO NOT WRITE ON THIS INSERT.

---

This document consists of **5** printed pages and **3** blank pages.



The Kariba Dam supplies 1266 MW of electricity to parts of both Zambia (including the Copperbelt) and Zimbabwe.

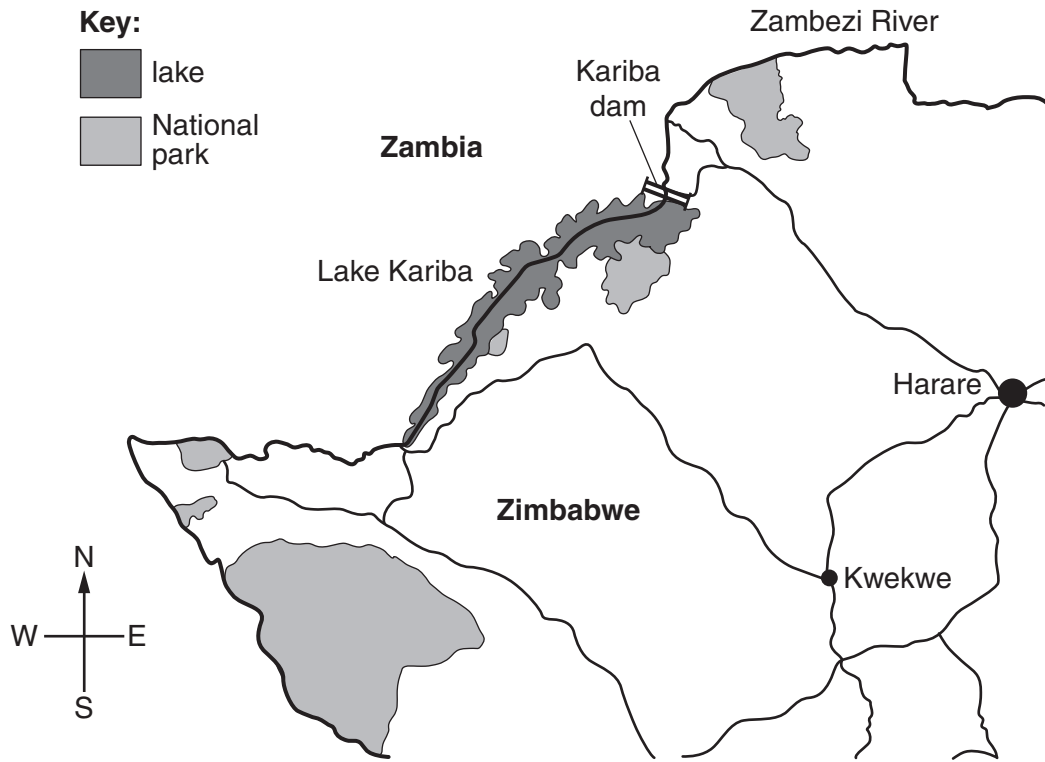
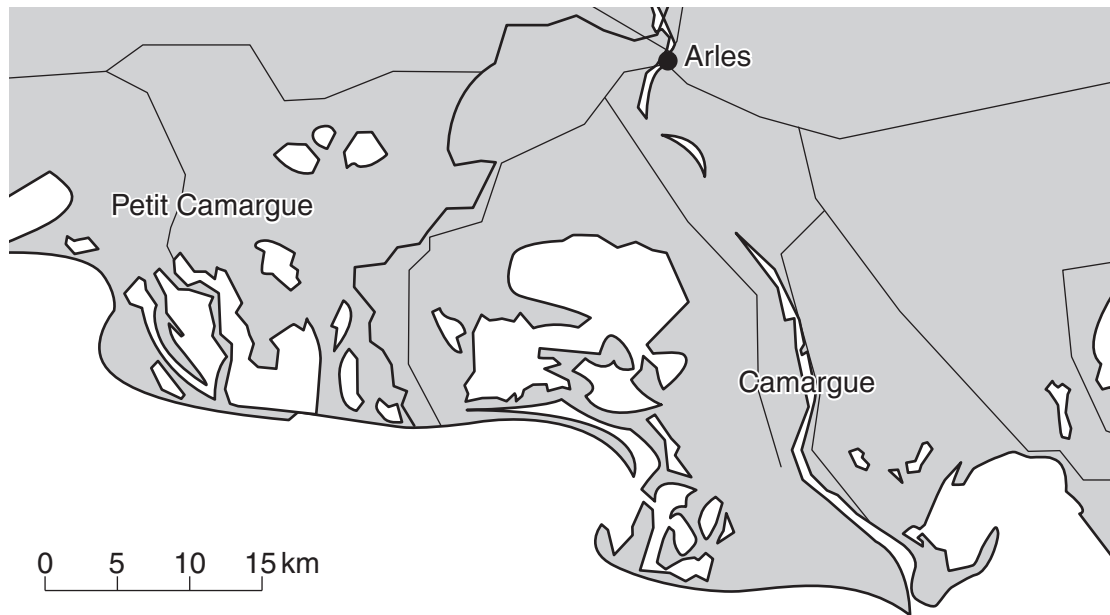


Fig. 1.2



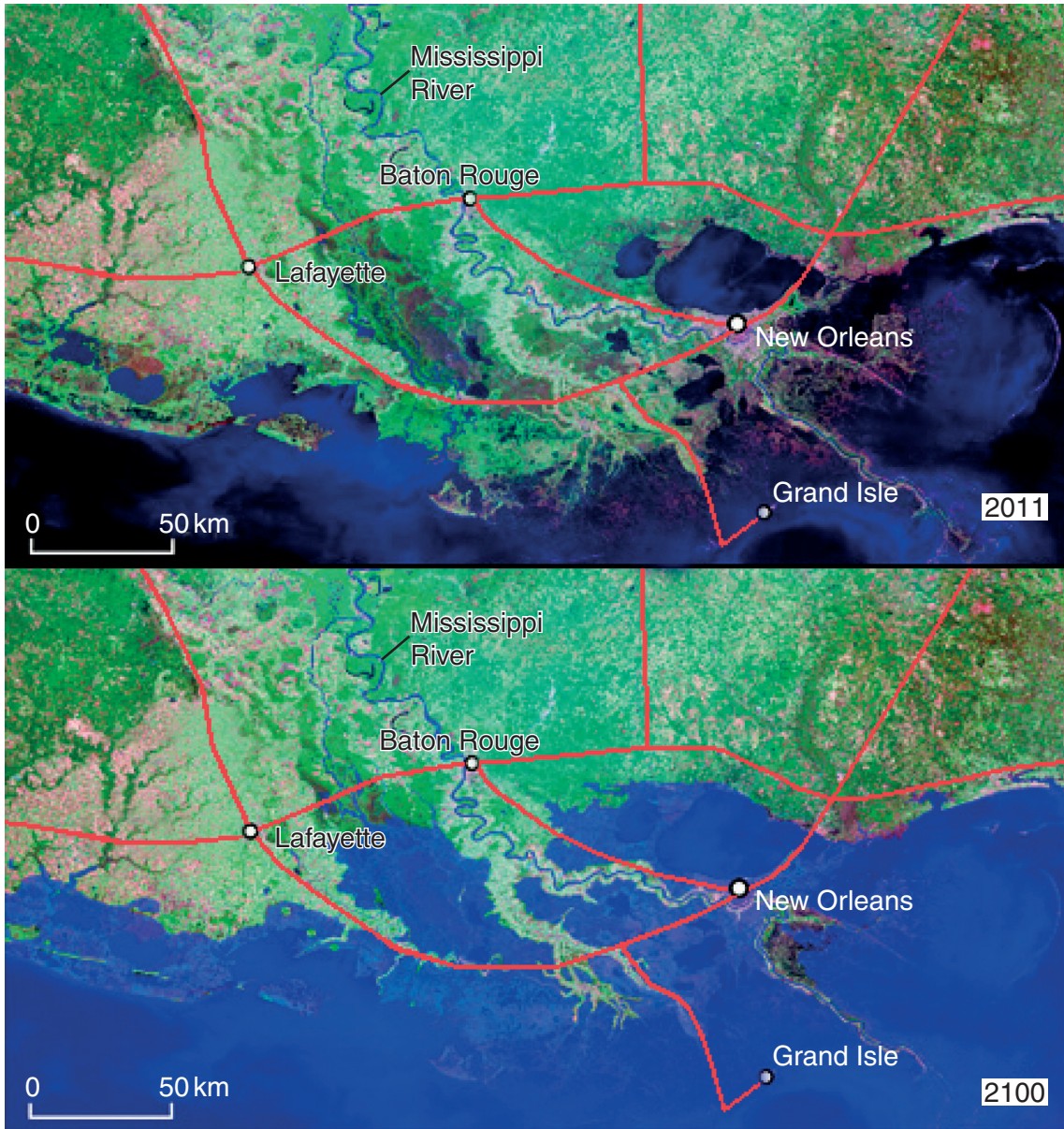
Fig. 2.1



Camargue is one of the largest areas of wetlands in Europe, in which numerous fragile ecosystems interpenetrate. This exceptional biological richness is produced by water and salt inputs into soil through periodic flooding.

The area is of international interest in terms of its vegetation and habitats, which are also essential for the protection of migratory birds.

**Fig. 2.3**



**Key**  
○ towns  
— roads

**Fig. 4.1**





**BLANK PAGE**

---

*Copyright Acknowledgements:*

Question 1b Figure 1.2 Photograph      © Rhys Jones; *Kariba Dam*; <http://upload.wikimedia.org/wikipedia/commons/f/f3/KaribaDam.jpg>.  
Question 2a Figure 2.1 Photograph      © Arterra Picture Library / Alamy, BEMJHA.  
Question 2b Figure 2.3 Photograph      © <http://tsouret.fond-ecran-image.com/blog-photo/files/2009/11/pont-de-gau-001.jpg>; Galerie photo de Tsouret.  
Question 4 Figure 4.1 Photograph      © <http://news.nationalgeographic.com/news/2009/06/090629-mississippi-river-sea-levels/>; Illustrations courtesy Mike Blum, created using NASA images.

Permission to reproduce items where third-party owned material protected by copyright is included has been sought and cleared where possible. Every reasonable effort has been made by the publisher (UCLES) to trace copyright holders, but if any items requiring clearance have unwittingly been included, the publisher will be pleased to make amends at the earliest possible opportunity.

University of Cambridge International Examinations is part of the Cambridge Assessment Group. Cambridge Assessment is the brand name of University of Cambridge Local Examinations Syndicate (UCLES), which is itself a department of the University of Cambridge.